

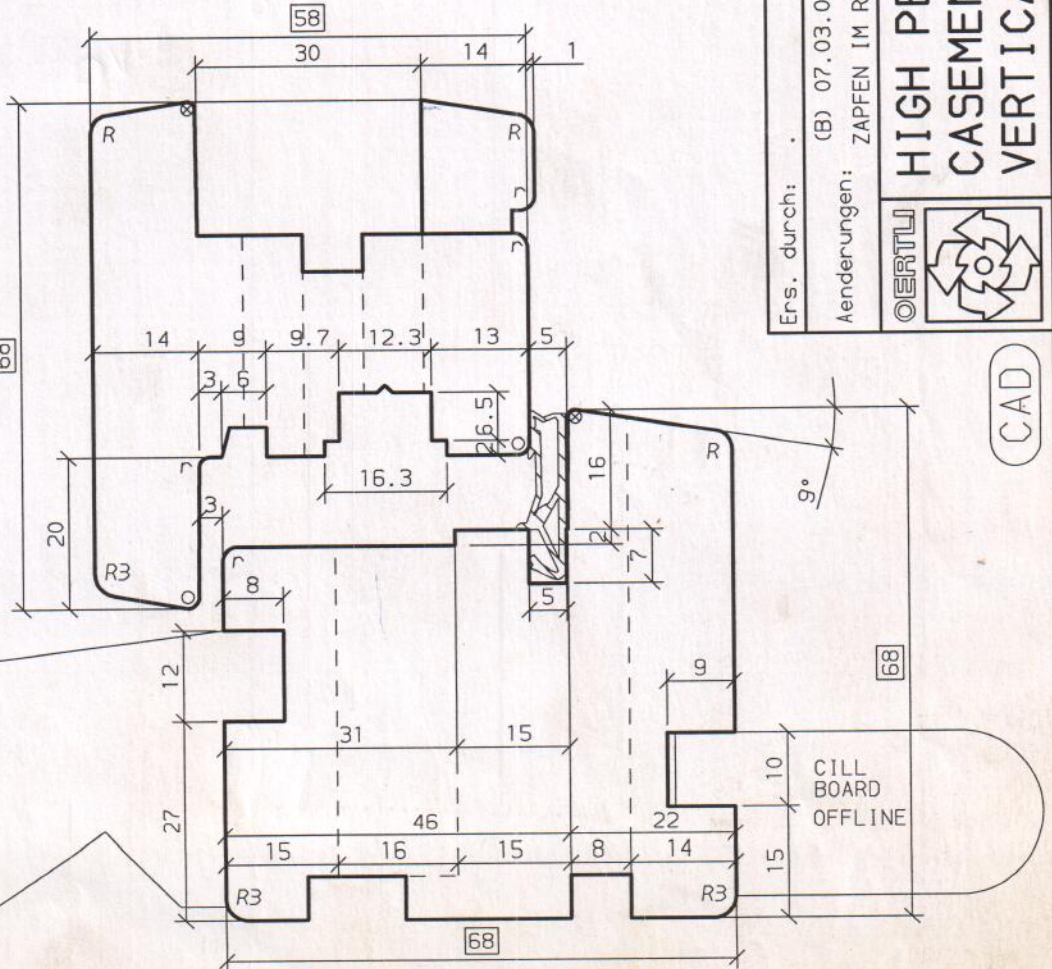
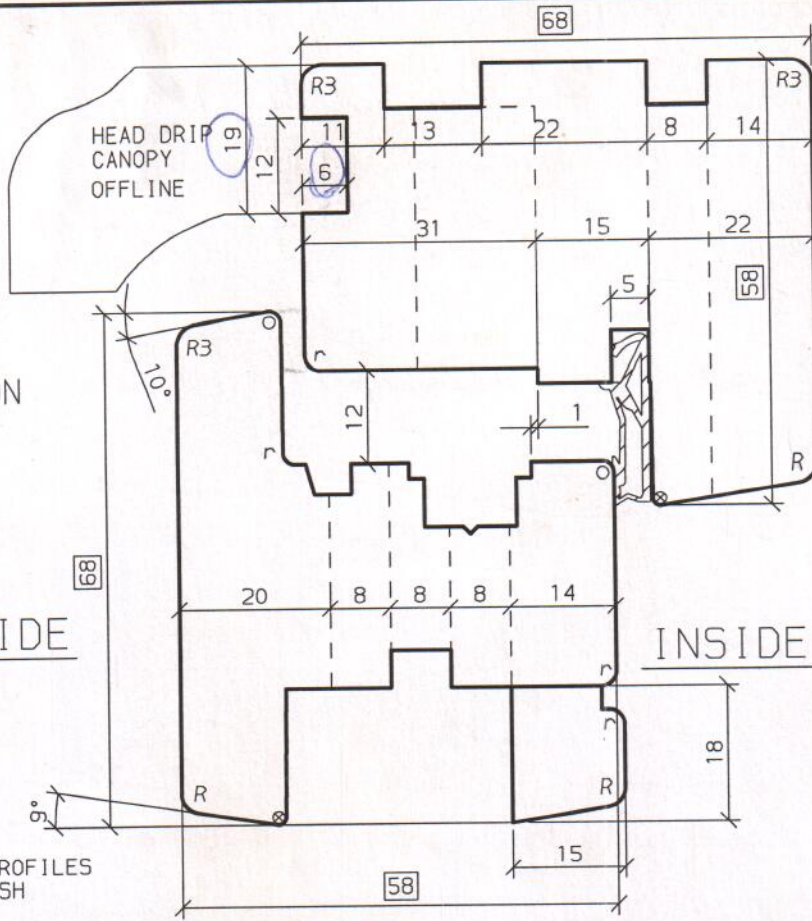
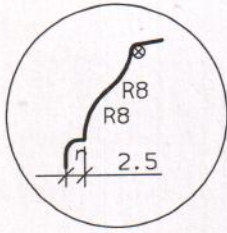
- ☒ = Schleifzugabe
- * = 0.5 mm
- = 0.5x45°
- X = 1 x45°
- = 1.5x45°
- = 2 x45°
- = R 0.5
- = R 1
- = R 1.5
- r = R 2
- R = R 2.5

HORIZONTAL SECTION
SAME AS TOP OF
VERTICAL SECTION

OUTSIDE

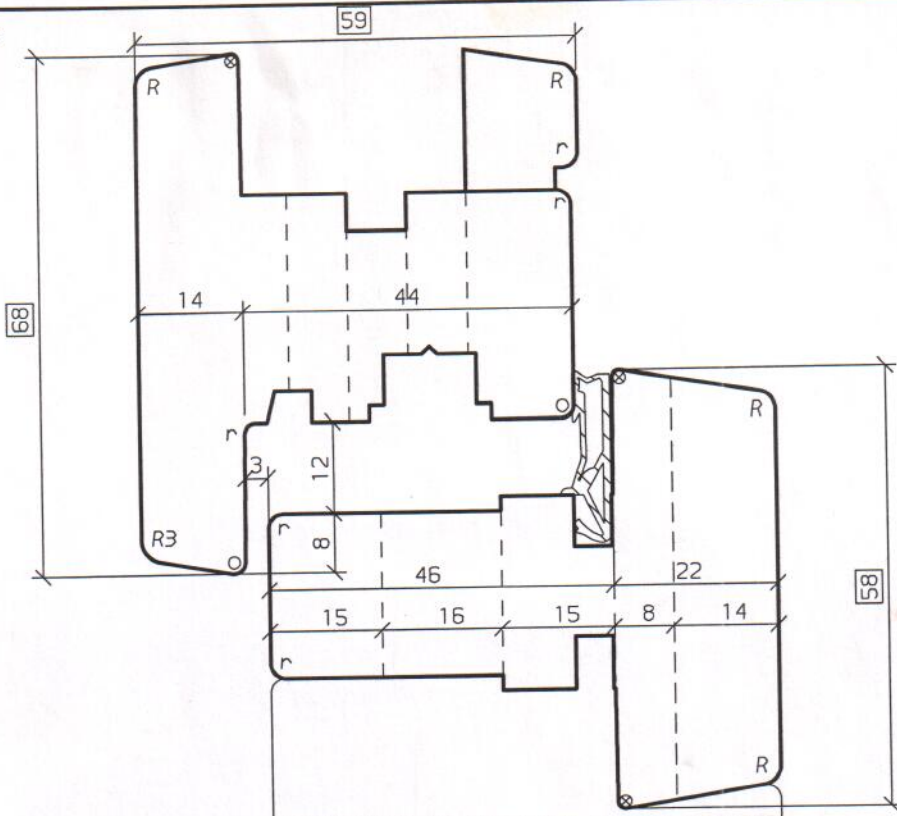
INSIDE

OPTIONAL PROFILES
FRAME + SASH



Ers. durch:	Ers. für: 4 0853822 000 A		Maßstab	Gez.	26.02.08	MIG
	(B) 07.03.08 wom		1:1	Gepr.	07.03.08	WOM
Anderungen:	ZAPFEN IM RAHMEN GEKÜRZT		%	ARCHIV		
OERTLI			K-Name: OERTLI-UK, FSD			
HIGH PERFORMANCE CASEMENT WINDOW VERTICAL & HORIZONTAL SECTION			K-Nr.: 166 372			
CAD			4 0853822 000 B			

- ☒ = Schleifzugabe
- * = 0.5 mm
- = 0.5x45°
- X = 1 x45°
- = 1.5x45°
- ∇ = 2 x45°
- = R 0.5
- ⊙ = R 1
- = R 1.5
- ∩ = R 2
- R = R 2.5

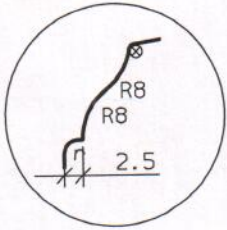


PRODUCTION ON EXISTING 4-SIDE MOULDER OFFLINE

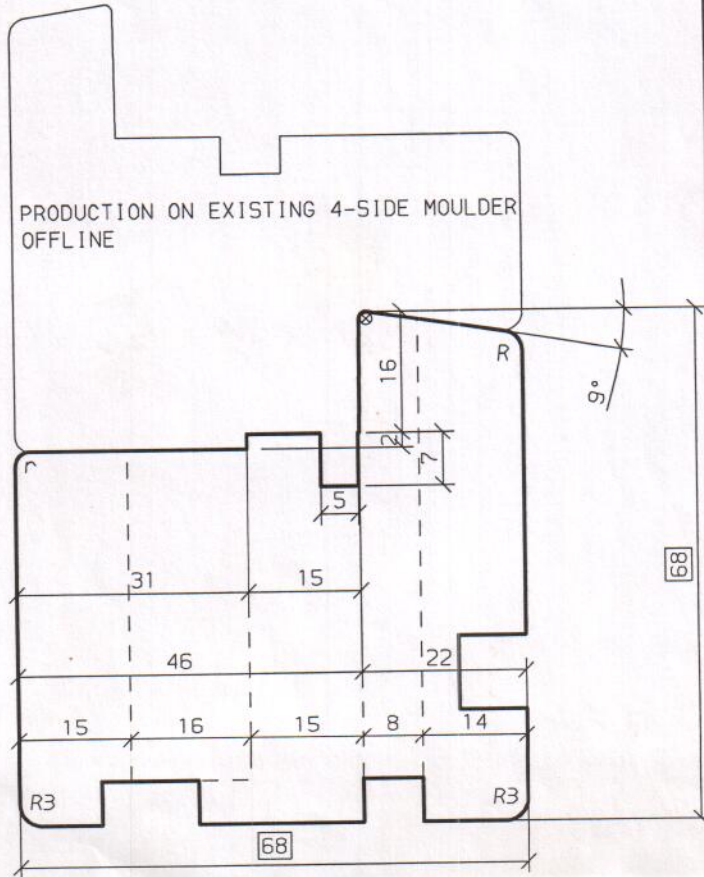
OUTSIDE

INSIDE

OPTIONAL PROFILES
FRAME + SASH



FIXED GLAZING



PRODUCTION ON EXISTING 4-SIDE MOULDER OFFLINE

Ers. für: 4 0853822 001 A

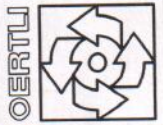
Ers. durch:

(B) 07.03.08 wom

Aenderungen: ZAPFENLÄNGE RAHMEN GEKÜRZT

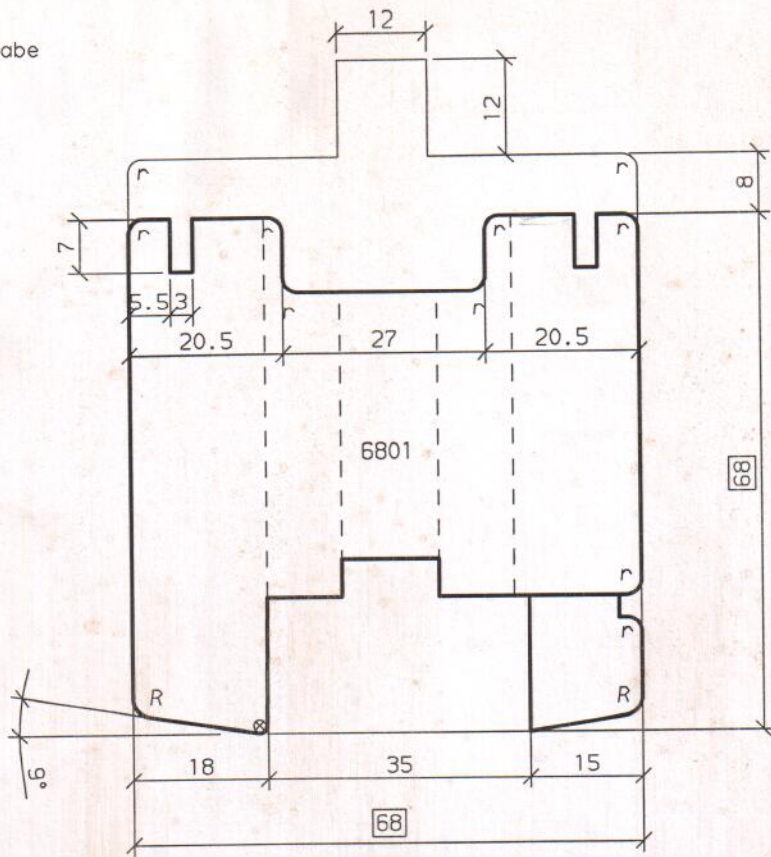
Maßstab	Gez.	27.02.08	MIG
1:1	Gepr.	07.03.08	WOM
%	ARCHIV		
K-Name: OERTLI-UK, FSD			
K-Nr.: 166 372			
4 0853822 001			B

**HIGH PERFORMANCE
CASEMENT WINDOW
TRANSOM/MULLION**



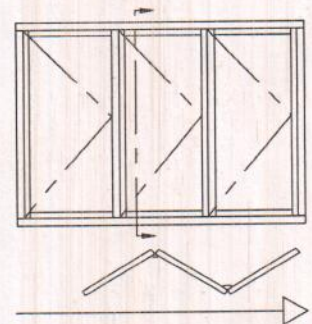
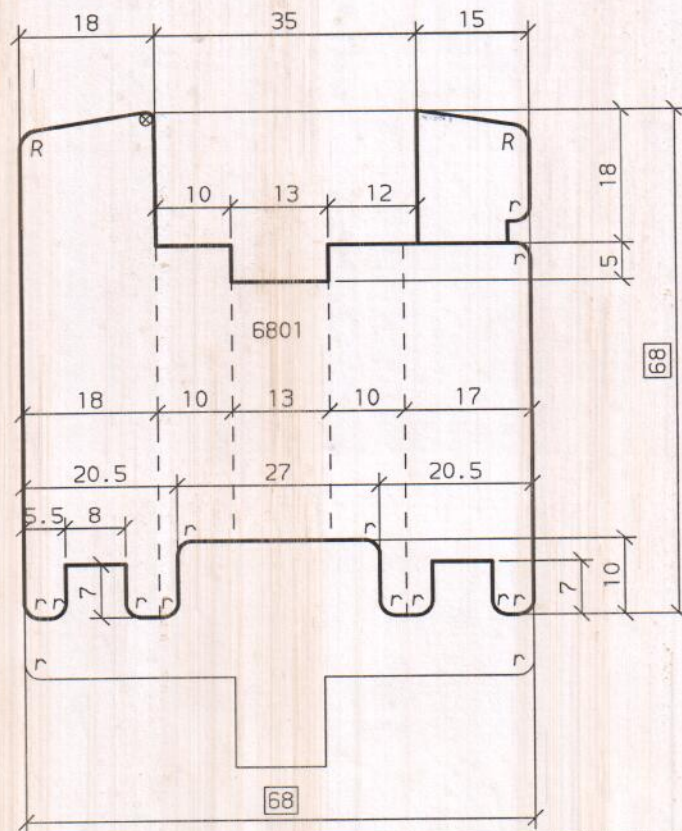
CAD

- ☒ = Schleifzugabe
- * = 0.5 mm
- = 0.5x45°
- = 1 x45°
- ◊ = 1.5x45°
- ▽ = 2 x45°
- = R 0.5
- = R 1
- = R 1.5
- r = R 2
- R = R 2.5



OUTSIDE

INSIDE



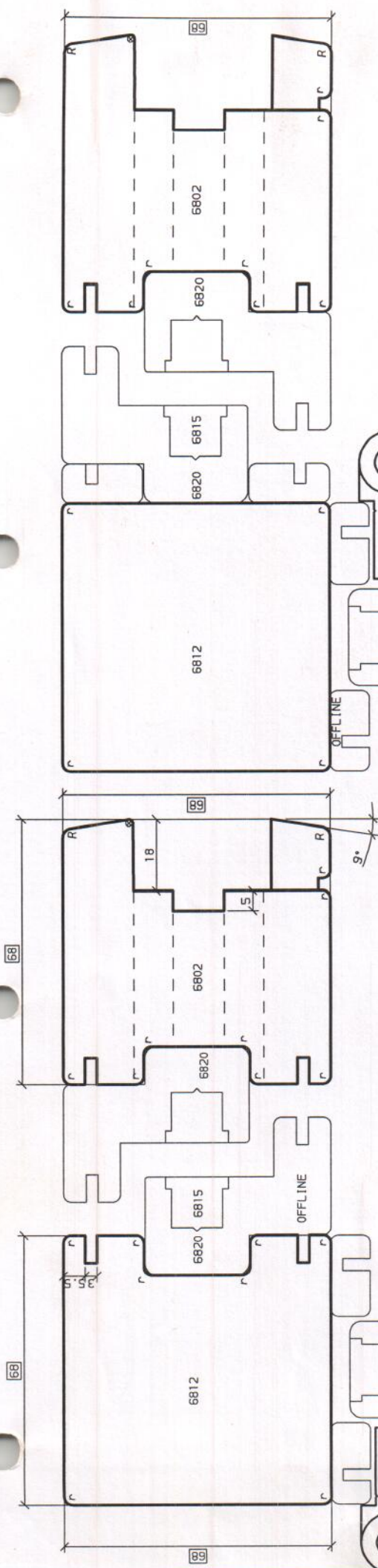
CAD

Ers. durch:	Ers. für:	Maßstab	Gez.	29.02.08	MIG
Aenderungen:		1:1	Gepr.	29.02.08	WOM
		%	ARCHIV		



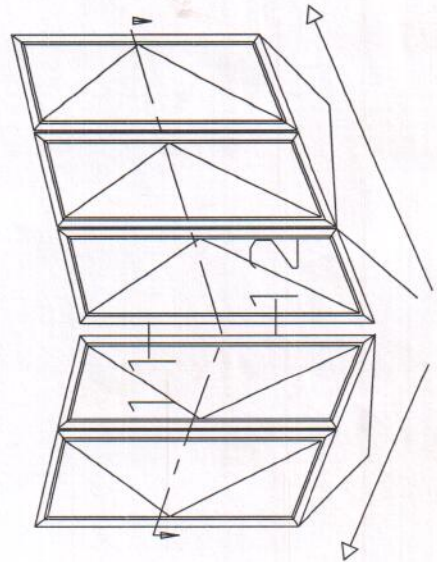
SLIDING DOOR EXTERNAL GLAZING
INSIDE/OUTSIDE OPENING
VERTICAL SECTION

K-Name: OERTLI-UK, FSD	
K-Nr.: 166 372	
4 0853822 005	A



OUTWARD
OPENING

INWARD
OPENING



- ⊗ = Schlei Fzugaße
- * = 0.5 mm
- = 0.5x45
- × = 1 x45
- = 1.5x45
- ▽ = 2 x45
- = R 0.5
- ⊙ = R 1
- = R 1.5
- ⊖ = R 2
- ⊕ = R 2.5

Ers. durch: (D) 17.03.08 wom Ers. für: 3 0853822 006 C

Änderungen: NEUES SYMBOL EINGELADEN



**SLIDING DOOR EXTERNAL GLAZING
INSIDE/OUTSIDE OPENING
HORIZONTAL SECTION**

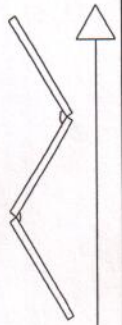
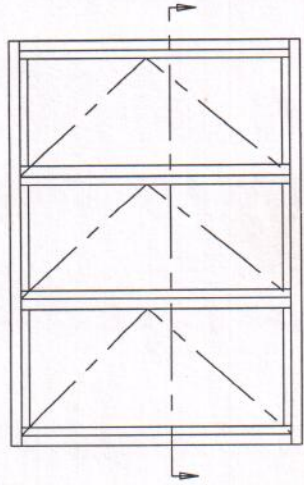
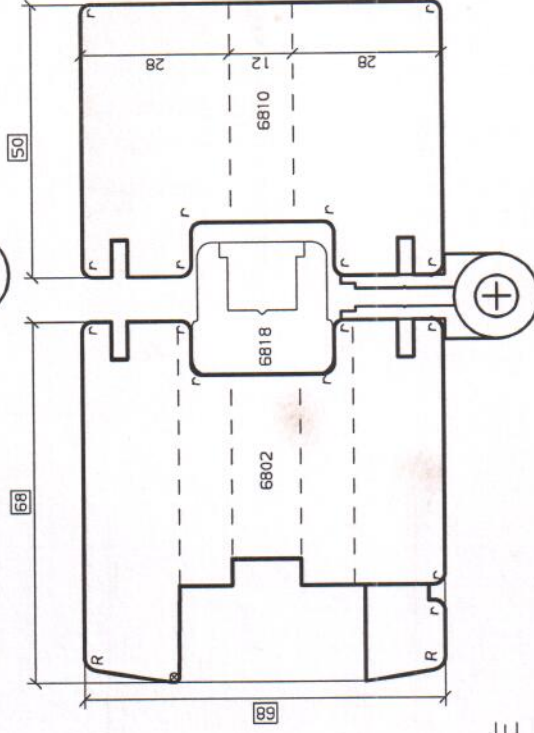
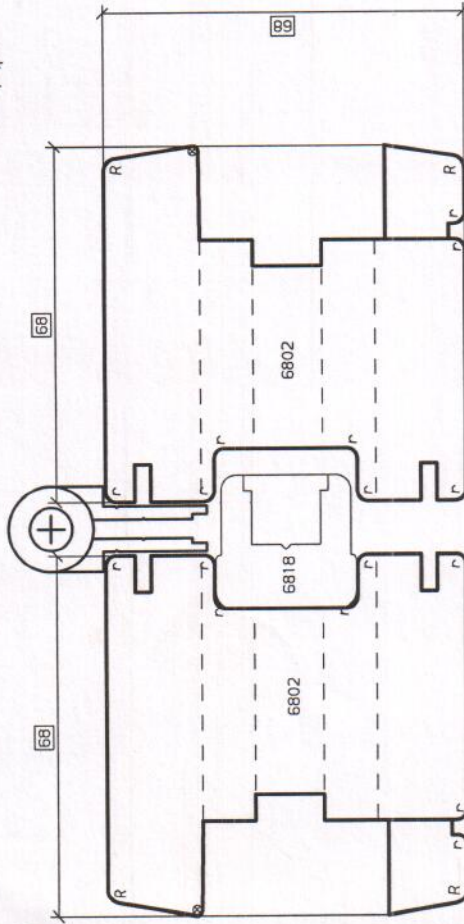
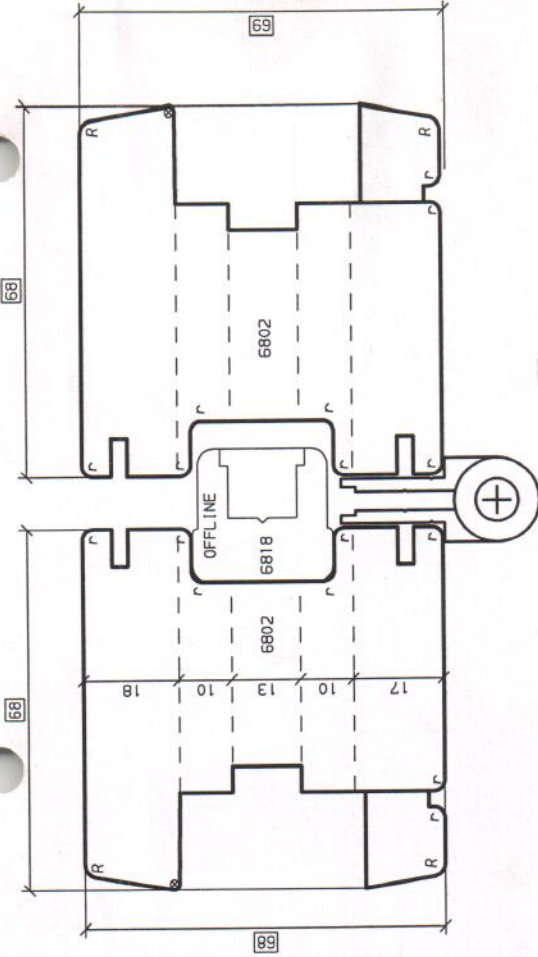
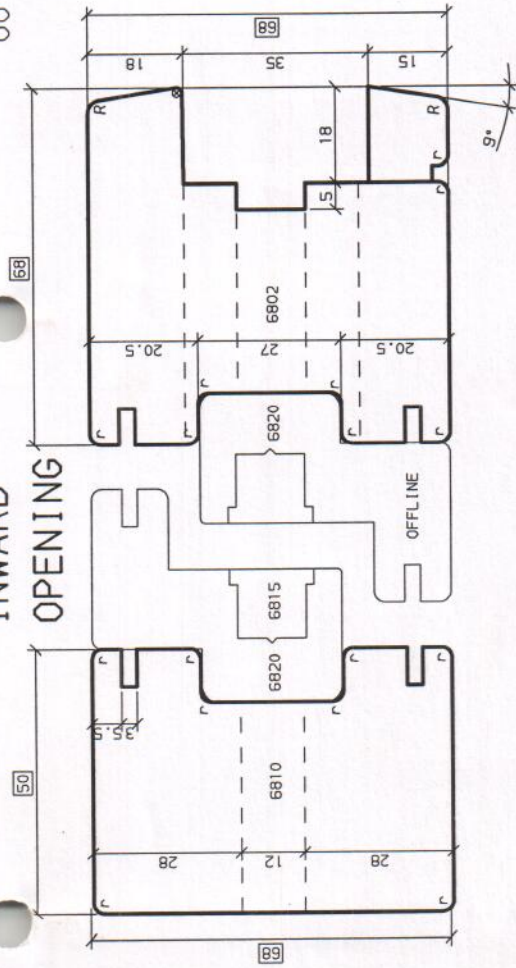
Maßstab	Gez.	29.02.08	MIG
1:1	Gepr.	17.03.08	WOM
1:9	ARCHIV		
K-Name: OERTLI-UK, F50			
K-Nr.: 166 372			

3 0853822 006 D

CAD

INWARD
OPENING

OUTSIDE



INSIDE

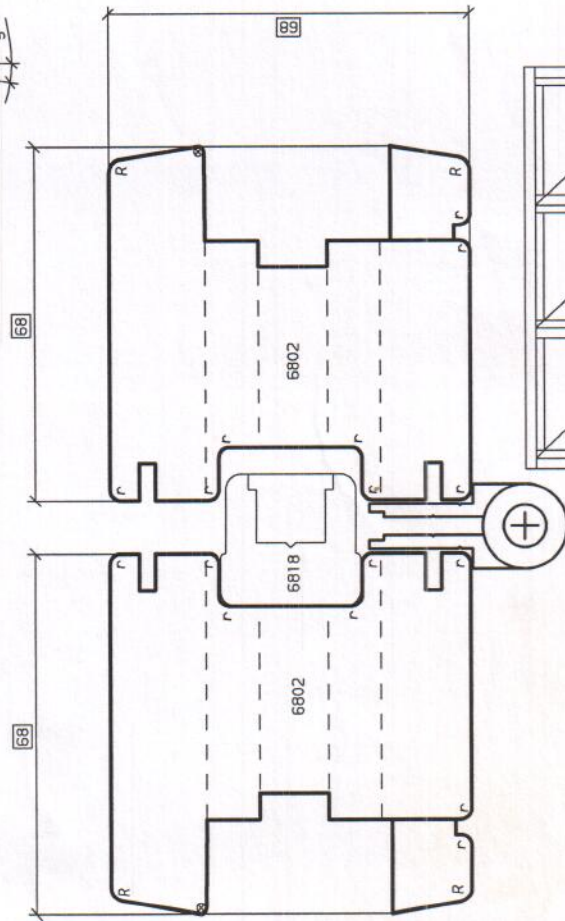
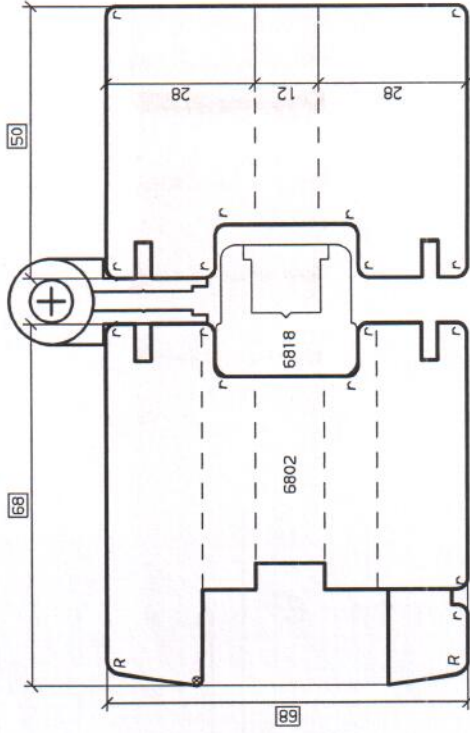
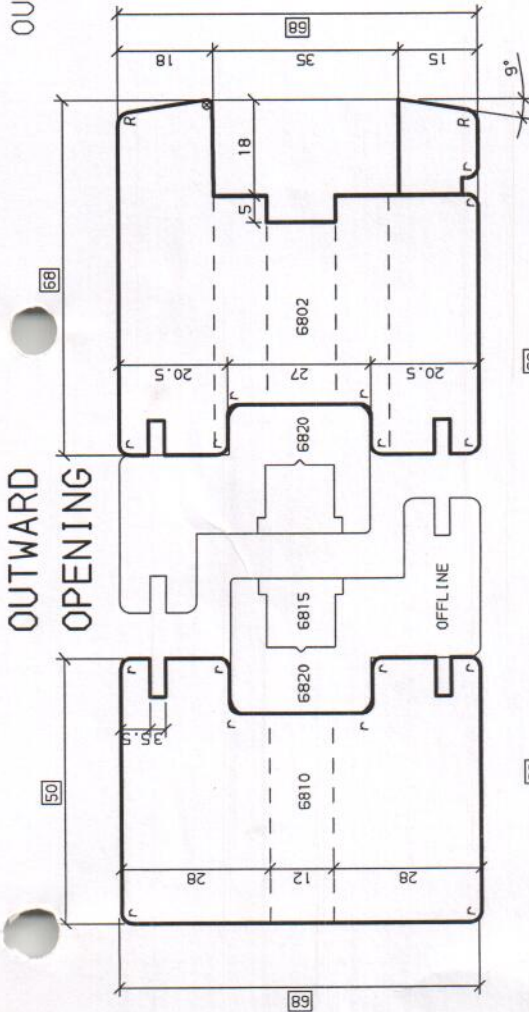
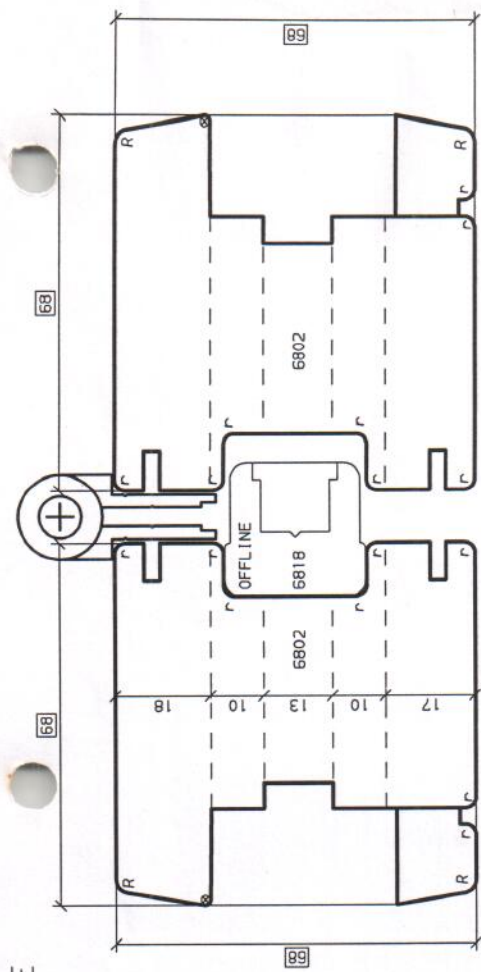
- ☐ = Schleifzugabe
- * = 0.5 mm
- = 0.5x45°
- X = 1 x45°
- = 1.5x45°
- ▽ = 2 x45°
- = R 0.5
- = R 1
- = R 1.5
- = R 2
- = R 2.5

Ers. durch:	Ers. für:	3 0853822 007 B	Maßstab	Gez.	29.02.08	MIG
(C) 11.03.08 wam			1:1	Gepr.	11.03.08	WOM
Änderungen:			x	ARCHIV		
RAHMEN PFOSTEN NEU 68X50				K-Name: OERTLI-UK, F50		
				K-Nr.: 166 372		
SLIDING DOOR EXTERNAL GLAZING INSIDE/OUTSIDE OPENING HORIZONTAL SECTION			3 0853822 007 C			

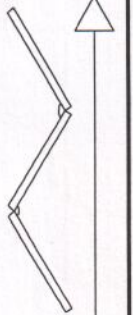
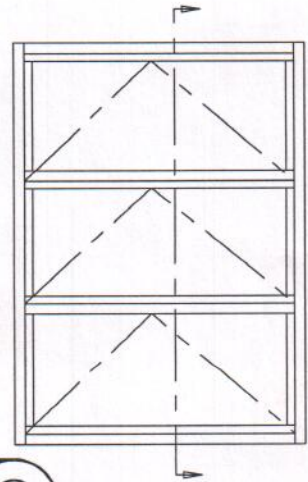
CAD

OUTSIDE

OUTWARD
OPENING



INSIDE



CAD

- ☐ = Schleifzugabe
- * = 0.5 mm
- = 0.5x45°
- X = 1 x45°
- = 1.5x45°
- ▽ = 2 x45°
- = R 0.5
- ⊙ = R 1
- = R 1.5
- ⊖ = R 2
- ⊕ = R 2.5

Ers. durch: (C) 11.03.08 wom Ers. Für: 3 0853822 008 B

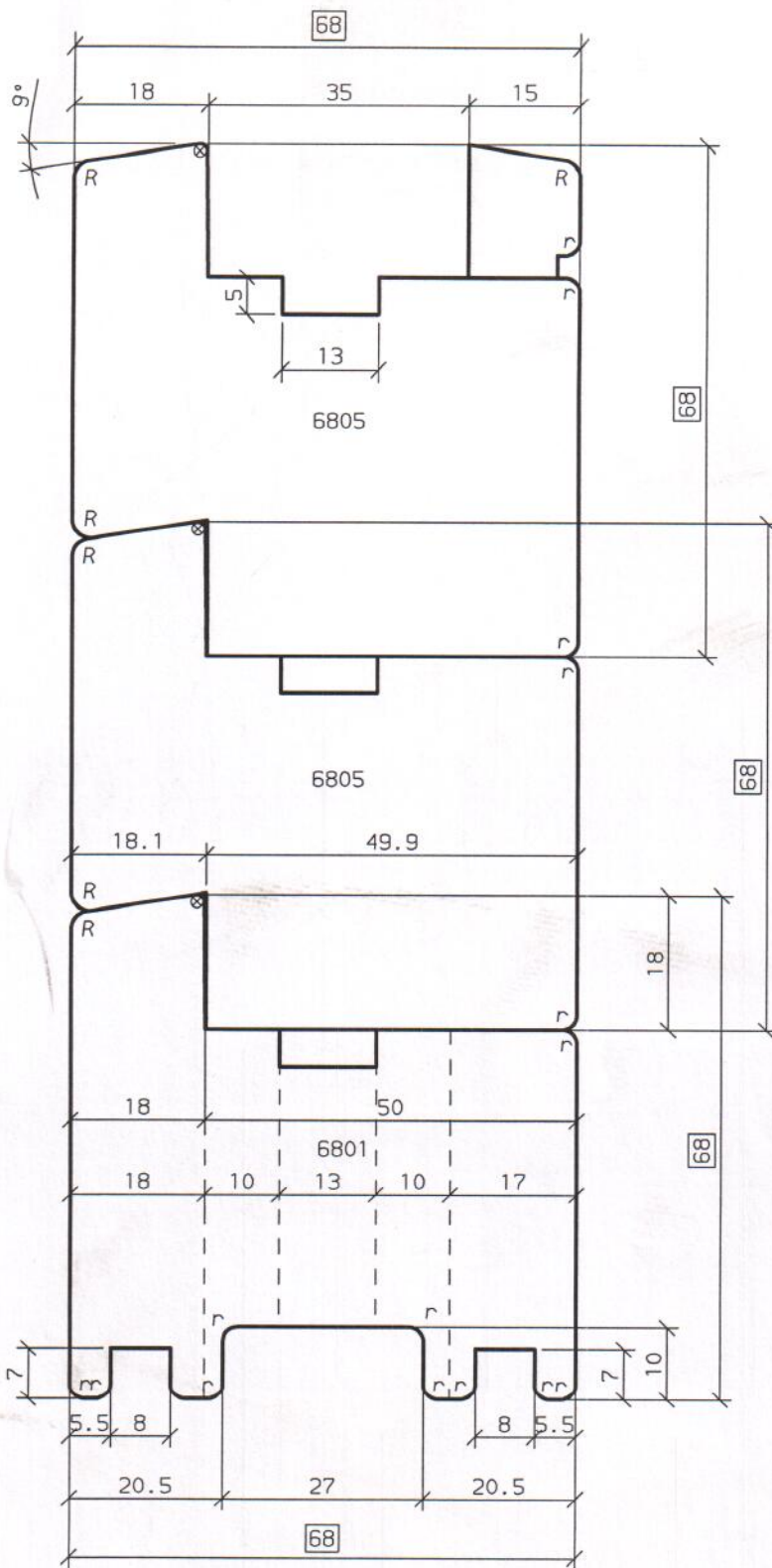
Änderungen: RAHMEN PFOSTEN NEU 68X50



**SLIDING DOOR EXTERNAL GLAZING
INSIDE/OUTSIDE OPENING
HORIZONTAL SECTION**

Maßstab	Gez.	29.02.08	MIG
1:1	Gepr.	11.-03.08	WOM
x	ARCHIV		
K-Name: OERTLI-UK, F5D			
K-Nr.: 166 372			
3 0853822 008 C			

- ☒ = Schleifzugabe
- * = 0.5 mm
- = 0.5x45°
- = 1 x45°
- = 1.5x45°
- ▽ = 2 x45°
- = R 0.5
- ⊗ = R 1
- = R 1.5
- = R 2
- R = R 2.5



CAD

Ers. durch: .	Ers. für: .	Maßstab	Gez.	29.02.08	MIG
Aenderungen: .		1:1	Gepr.	29.02.08	WOM
		%			
DOOR BOTTOM RAIL AND PIECES VERTICAL SECTION		K-Name: OERTLI-UK, FSD			
		K-Nr.: 166 372			
4 0853822 009				A	